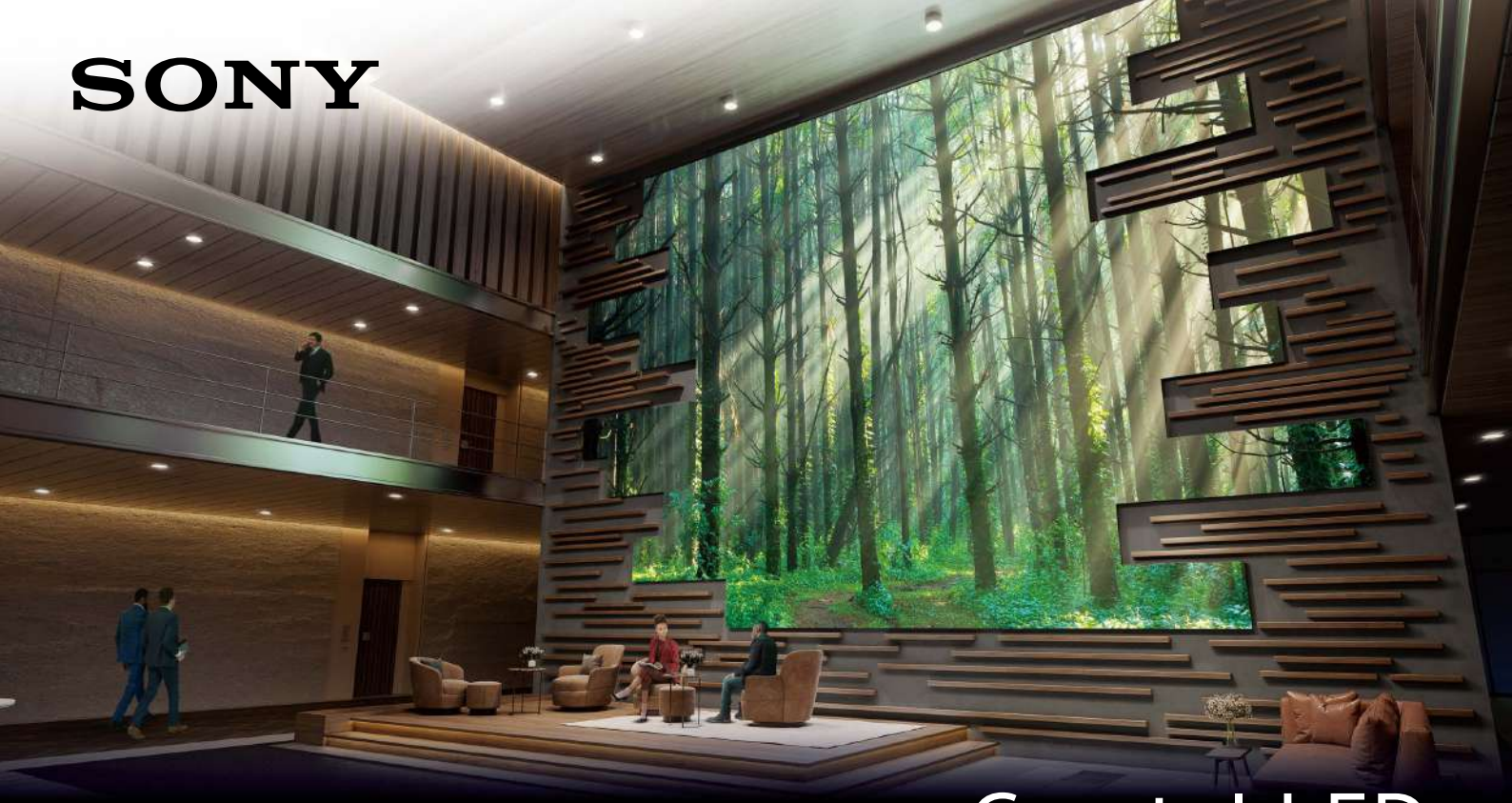


SONY



Preliminary

Crystal LED

Large-scale micro-LED displays and video walls

C-series

Our new C-series high-contrast micro-LED displays create truly immersive environments with precise image detail. The displays are ideal for corporate showrooms, lobbies and entrance ways.

Main Features

Sony's advanced imaging technologies combine to provide an incredibly immersive visual experience.

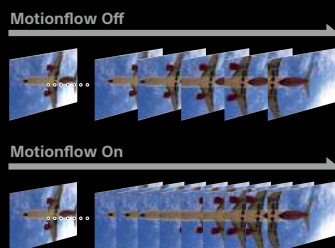


X1™ for Crystal LED

The new Crystal LED series is equipped with our high-performance image quality processor "X1™ for Crystal LED" incorporating the latest LED control technology developed for our pioneering Crystal LED, alongside the signal processing technology praised in Sony's BRAVIA TV series.



Reality Creation technology upscales lower resolution input signals for finely-detailed images, even when viewed close-up with exclusive database type processing.



Motionflow technology reduces motion blur for smooth reproduction of rapidly-moving images.



Deep black coating and 22bit Super Bit Mapping signal processing realize high contrast (1,000,000:1) with smooth and rich image gradation.

The new Crystal LED C-series displays meet the needs of creative designers and systems integrators alike, with simple installation and flexible configurations for multiple applications.

pro.sony/crystal-led





Preliminary Specifications

Note: Specifications are subject to change.

Display Cabinet C-series

Specification	ZRD-C12A	ZRD-C15A
Pixel Pitch	1.26 mm	1.58 mm
Surface	Deep Black Coating	
Resolution (W x H)	480 x 270	384 x 216
Brightness (Max.)	800 cd/m ²	TBD
Contrast Ratio (0 lx)	More than 1,000,000: 1	
Bit Depth	22 bit Internal Processing	
Frame Rate	Up to 120 fps (TBD)	
Signal Interface	1 in 1 out (2 x RJ45)	
Power Requirements	AC100-240 V, 50 / 60 Hz	
Power Consumption (Max.)	180 W (Per-sqm: 866 W) (TBD)	
Power Consumption (Ave.)	90 W (Per-sqm: 433 W) (TBD)	
Dimensions (W x H x D)	608 x 342 x 76 mm	
Mass	Under 10 kg (Per-sqm: Under 48 kg) (TBD)	
Application	Indoor	

Display Controller

Specification	ZRCT-300
Maximum Control Number of Display Cabinet	ZRD-C12A: 64 ZRD-C15A: 100
Maximum Input Resolution (W x H)	3840 x 2160
Maximum Input Frame Rate	120 fps
Multiple Controller Link	Yes
Maximum Linkage Number of Controller	20
Video Input	HDMI2.0 x 2, DisplayPort (DP1.2) x 2
Cabinet Output	RJ45 x 12
Control	RJ45 (ethernet) x 1, USB x 1
Fan noise	27 dBA - 32 dBA (27 dBA@25°C, 32 dBA@35°C)
Operation Temperature	0 - 35°C
Storage Temperature	-20°C - 60°C
Operation Humidity	20 - 80% (No condensation)
Storage Humidity	20 - 80% (No condensation)
Power Requirements	AC100 - 240V, 50 / 60 Hz
Power Consumption (Max.)	90 W (TBD)
Dimensions (W x H x D) (Without pres	440 x 65 x 349 mm 17 3/8 x 2 5/8 x 13 3/4 in *1.5 U 19 - inch rack
Mass	6.3 kg / 13 lb 14.2 oz

Input Signal

DisplayPort : Single Input

Resolution	Input frame rate*1	Color bit depth	Input color sampling
3840 x 2160**2	60P/50P/30P/25P/24P	8/10 bit	RGB 4:4:4
1920 x 2160	120P**2/100P**2/60P/30P/25P/24P		
1920 x 1080	120P/100P/60P/50P/30P		

DisplayPort : Dual Input

Resolution	Input frame rate*1	Color bit depth	Input color sampling
3840 x 2160**3	120P/100P	8/10 bit	RGB 4:4:4

*1: 1,000/1,001 frame rate is also supported.
*2: Only multi-stream is supported.
*3: Supported by two input signals of 1920 x 2160, 120P.

HDMI

Resolution	Input frame rate*1	Input bit depth	Input color sampling
3840 x 2160	60P/50P	8 bit	RGB 4:4:4**/YCbCr 4:4:4**/YCbCr 4:2:0
		10 bit	YCbCr 4:2:2 (TBD)
		12 bit	YCbCr 4:2:2**2
	30P/25P/24P	12/10 bit	RGB 4:4:4**/YCbCr 4:4:4**
		8 bit	RGB 4:4:4/YCbCr 4:4:4
		12 bit	YCbCr 4:2:2
1920 x 1080	60P/50P/30P/25P/24P	12/10/8 bit	RGB 4:4:4/YCbCr 4:4:4/YCbCr 4:2:2**3
1280 x 720	60P/50P		
1024 x 768	60P		
800 x 600			
720 x 480			
720 x 576	50P		
640 x 480	60P		

*1: 1,000/1,001 frame rate is also supported for 60p/30p/24p.
*2: Strongly recommend using premium high speed HDMI cables.
*3: 12bit only

Applications



Corporate Lobbies



Corporate Showrooms



Boardrooms